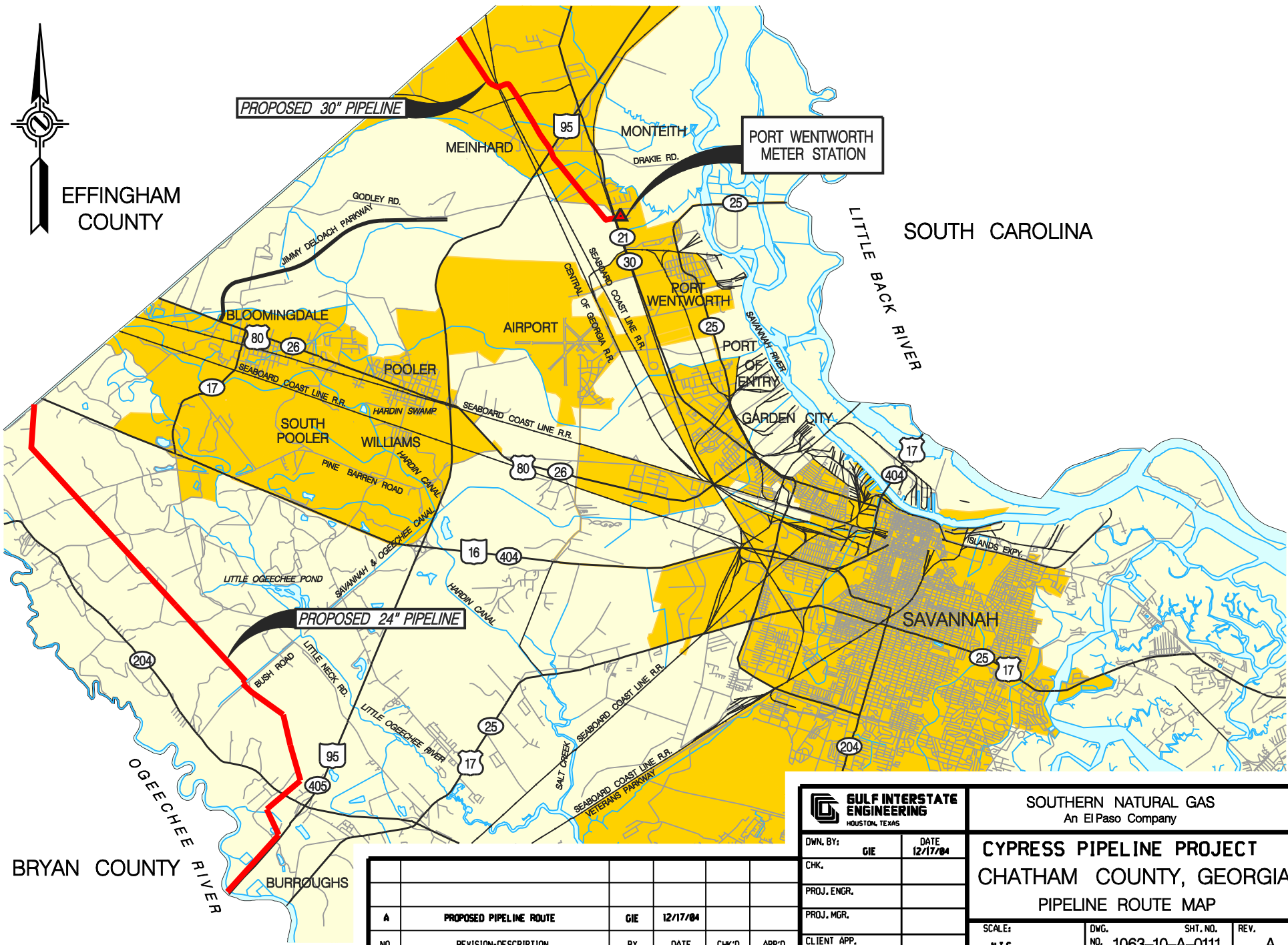
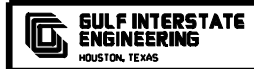




EFFINGHAM COUNTY



BRYAN COUNTY



SOUTHERN NATURAL GAS
An El Paso Company

OWN. BY:	GIE	DATE	12/17/04
CHK.			
PROJ. ENGR.			
PROJ. MGR.			
CLIENT APP.			

**CYPRESS PIPELINE PROJECT
CHATHAM COUNTY, GEORGIA
PIPELINE ROUTE MAP**

SCALE:	DWG. NO.	SHT. NO.	REV.
N.T.S.	1063-10-A-0111		A

NO.	REVISION-DESCRIPTION	BY	DATE	CHK'D	APP'D
A	PROPOSED PIPELINE ROUTE	GIE	12/17/04		